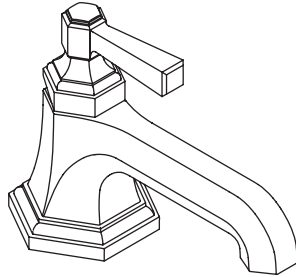
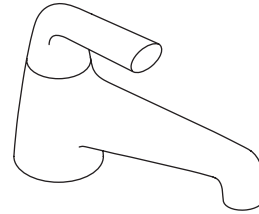


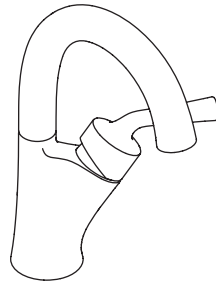
### INSTALLATION INSTRUCTIONS



**P22740**



**P23201**



**P24407**

## INSTALLATION INSTRUCTIONS

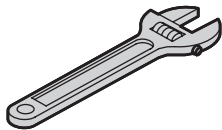
### THANK YOU FOR CHOOSING KALLISTA

We appreciate your commitment to KALLISTA quality products. Please take a moment to review this manual before you install your KALLISTA product. If you encounter any installation or performance problems, please do not hesitate to contact us at the phone number listed at the bottom of the page.

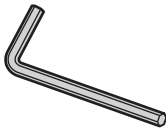
### BEFORE YOU BEGIN

- Prior to installation, unpack the new faucet and inspect it for damage. Return the faucet to its protective carton until you are ready to install it.
- Observe all local plumbing and building codes.
- Shut off the main water supply.
- Inspect the drain and supply tubing. Replace if necessary.
- If possible, assemble the faucet to the lavatory before installing the lavatory.
- KALLISTA reserves the right to make revisions in the design of products without notice, as specified in the Price Book.

### TOOLS AND MATERIALS



Adjustable Wrench



Hex Wrench



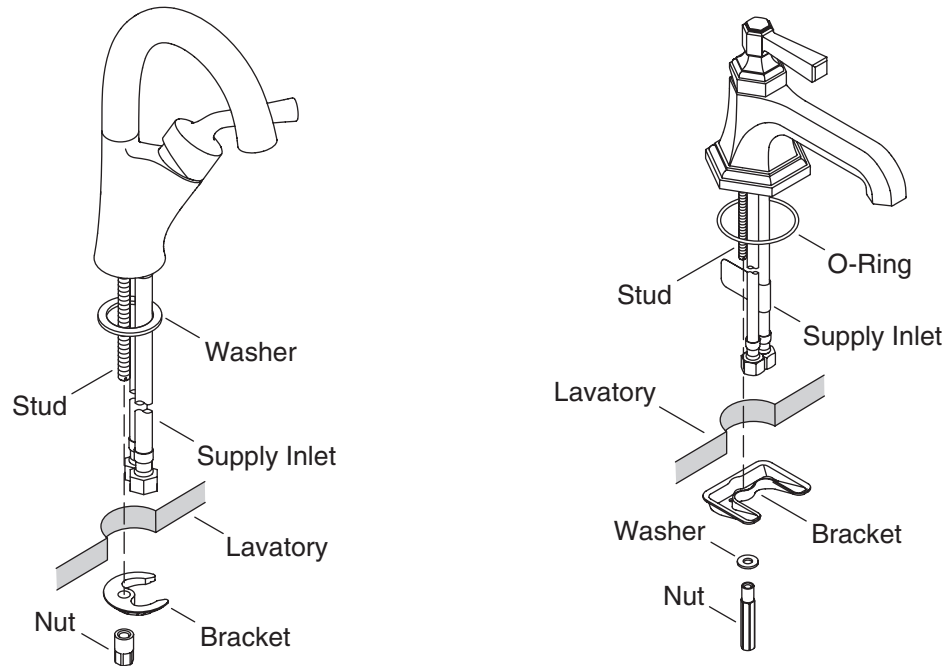
Thread Sealant



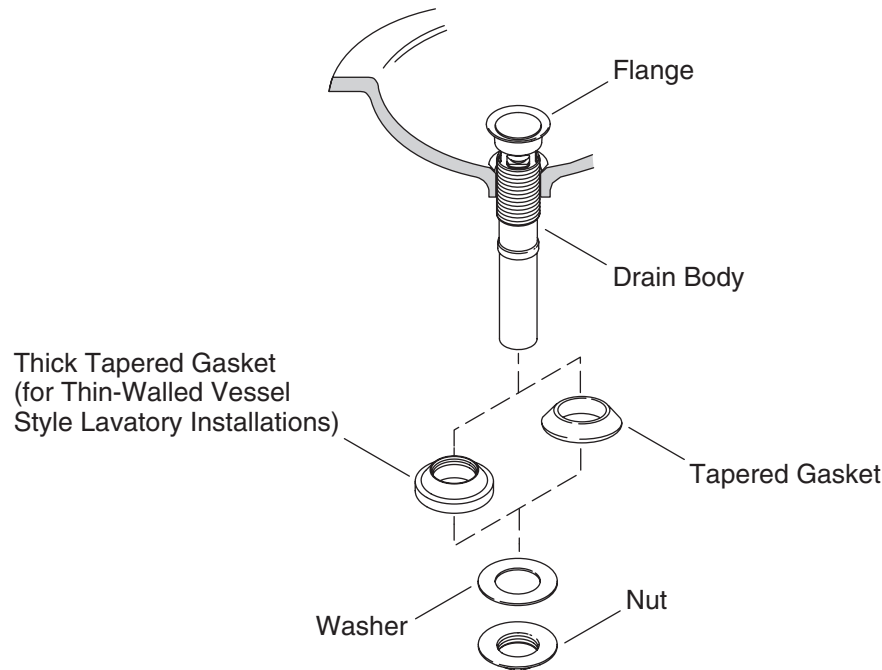
Plumbers Putty

## INSTALLATION INSTRUCTIONS

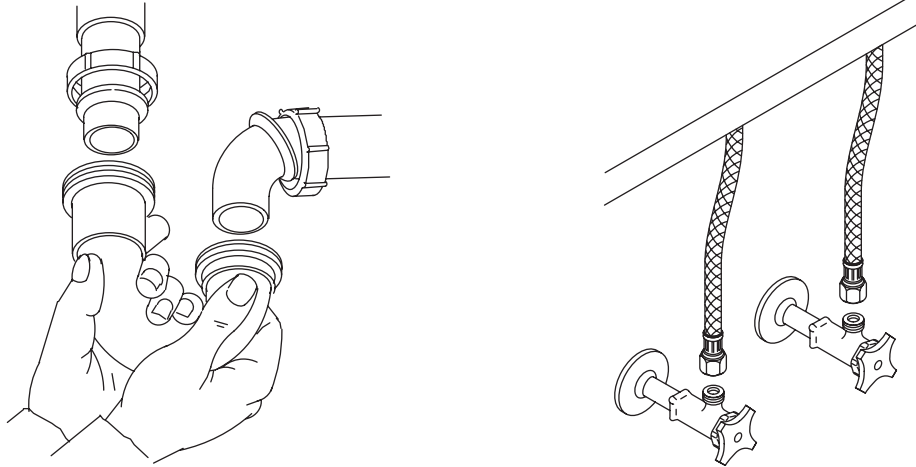
## 1. INSTALL THE FAUCET



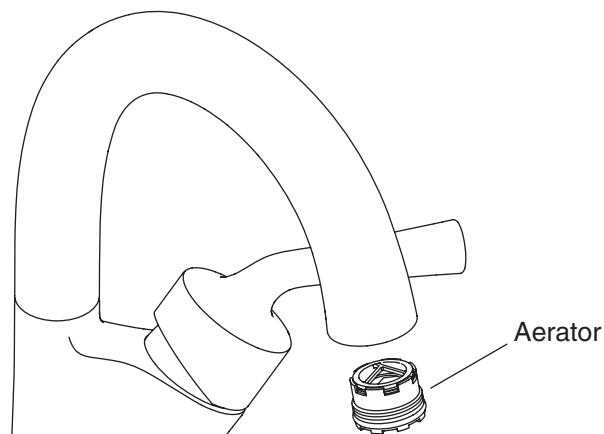
- Ensure that the washer or O-ring is seated in the groove on the underside of the faucet.
- Feed the faucet supply inlets through the faucet hole of the lavatory, then position the faucet.
- For models P23201 and P24407**, slide the bracket over the stud and tighten the nut to secure.
- For model P22740**, slide the bracket and the washer over the stud and tighten the nut to secure.

**INSTALLATION INSTRUCTIONS****2. INSTALL THE DRAIN**

- If present, remove the protective plastic cap from the drain and discard.
- Remove the nut, washer, and gasket from the drain body.
- Apply a bead of plumbers putty or other sealant around the underside of the flange according to the manufacturer's instructions.
- For drains with metal stoppers:** Close the drain and rotate the drain body until the logo is positioned horizontally.
- Insert the drain into the drain hole and press into place.
- Slide the gasket (tapered side up) onto the drain body.
- Slide the washer over the threads on the drain body.
- Thread the nut up the drain body until snug against the underside of the lavatory. Use care not to rotate the drain while tightening the nut.
- Using a wrench, tighten the nut.
- Remove any excess putty or sealant.
- If the lavatory is not installed, install it at this time. Follow the lavatory manufacturer's instructions.

**INSTALLATION INSTRUCTIONS****3. COMPLETE THE CONNECTIONS**

- CAUTION: Risk of restricted water flow and product damage.** Use care when bending the supplies to avoid kinking.
- CAUTION: Risk of product damage.** Do not overtighten the connections.
- Connect the P-trap to the drain body.
- Connect the supply tubes to the supply stops (left is hot; right is cold). Tighten the connections with an adjustable wrench.

**4. COMPLETE THE INSTALLATION**

- Remove the aerator and remove any debris.
- Turn on the main water supply and check for leaks. Repair as needed.
- Lift and rotate the faucet handle to the full hot position, then the full cold position.
- Run water through the spout for one minute to remove any debris. Check for leaks and repair as needed.
- Push the lever handle down to close the water supplies and then reinstall the aerator.